



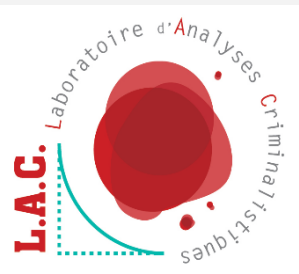
International Association
for Identification

99th International Educational Conference
Minneapolis, Minnesota - August 10-16, 2014
thelal.org

Decision Map for Bloodstain Pattern Analysis

Philippe Esperança, CBPE

French Supreme Court Forensic Expert
ENFSI BPA PG Chairman
SWGSTAIN member



Purposes of Map Decision for bloodstain patterns

- Improve the effectiveness of bloodstain pattern recognition
- Improve the success of BPA in court cases
- Different terms for fundamentally the same thing
 - Recognition, identification, categorization, taxonomy, etc

Purposes of Map decision for bloodstain patterns

- These issues are taken from the viewpoint of categorizing information and standards
Do not reflect any deep knowledge of blood, BPA or crime scene investigation!
- KISS
 - Keep it simple
 - Makes it more accessible to non-experts
- Definitely not a trivial exercise!!!

Problems encountered

- WYSIWYG (*What you see is what you get*)
 - ✓ Using a qualitative measure to differentiate patterns
 - ✓ Describe characteristic data
 - ✓ DON'T use all description, focus on specific characteristics (=criteria)

- Categorizing the effects (bloodstain patterns) and NOT the sources (mechanisms) of the bloodstains

- Mixing up different types of criteria

- Different mechanisms (sources) might have same pattern criteria

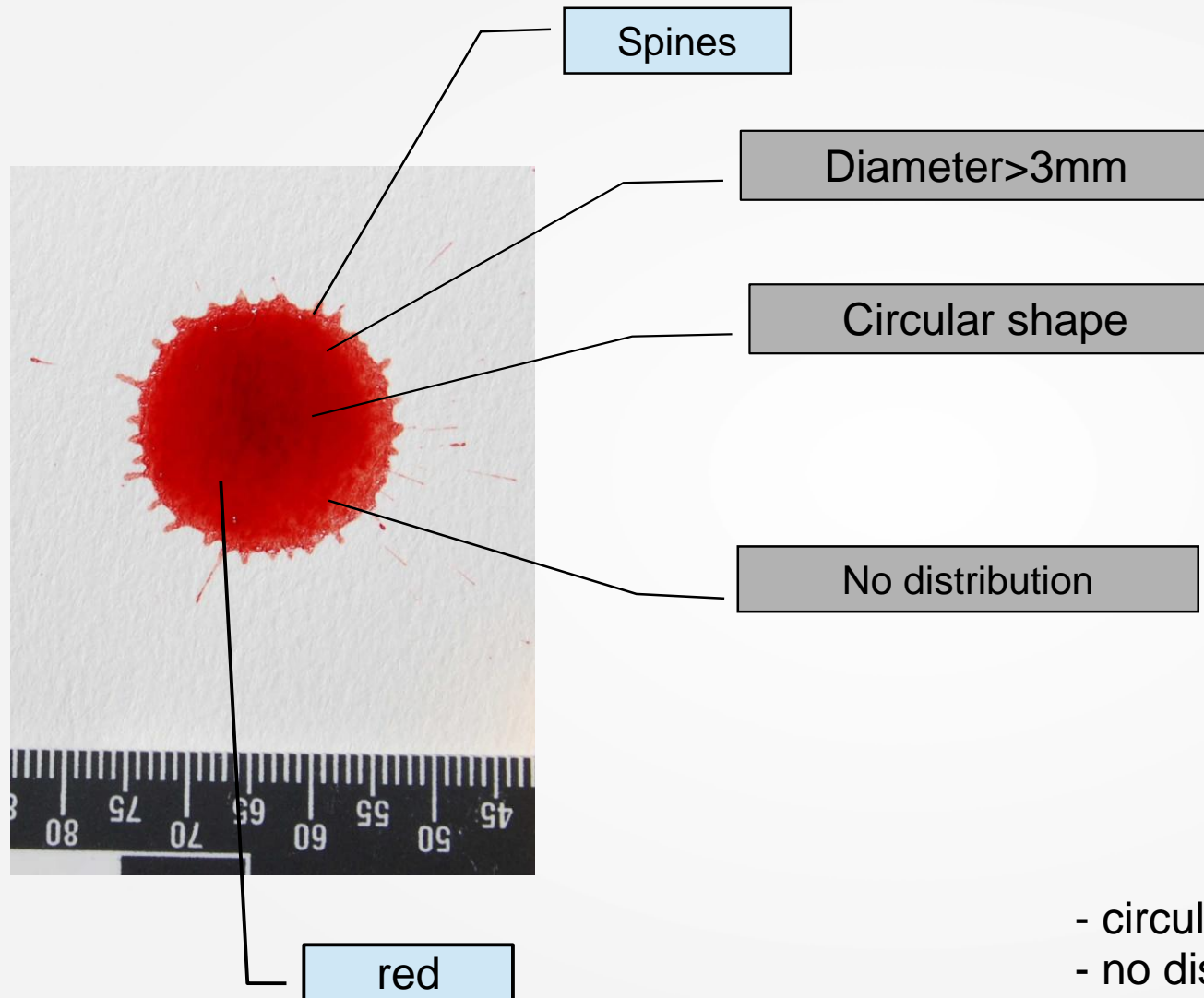
Problems encountered

- Only objective criteria
 - ✓ Avoid bigger, shorter, redder

- DON'T use metric criteria (eg. less than 1cm)
 - ✓ Without any scientific paper agreement

- Effects of the bloodstained surface and of the blood source

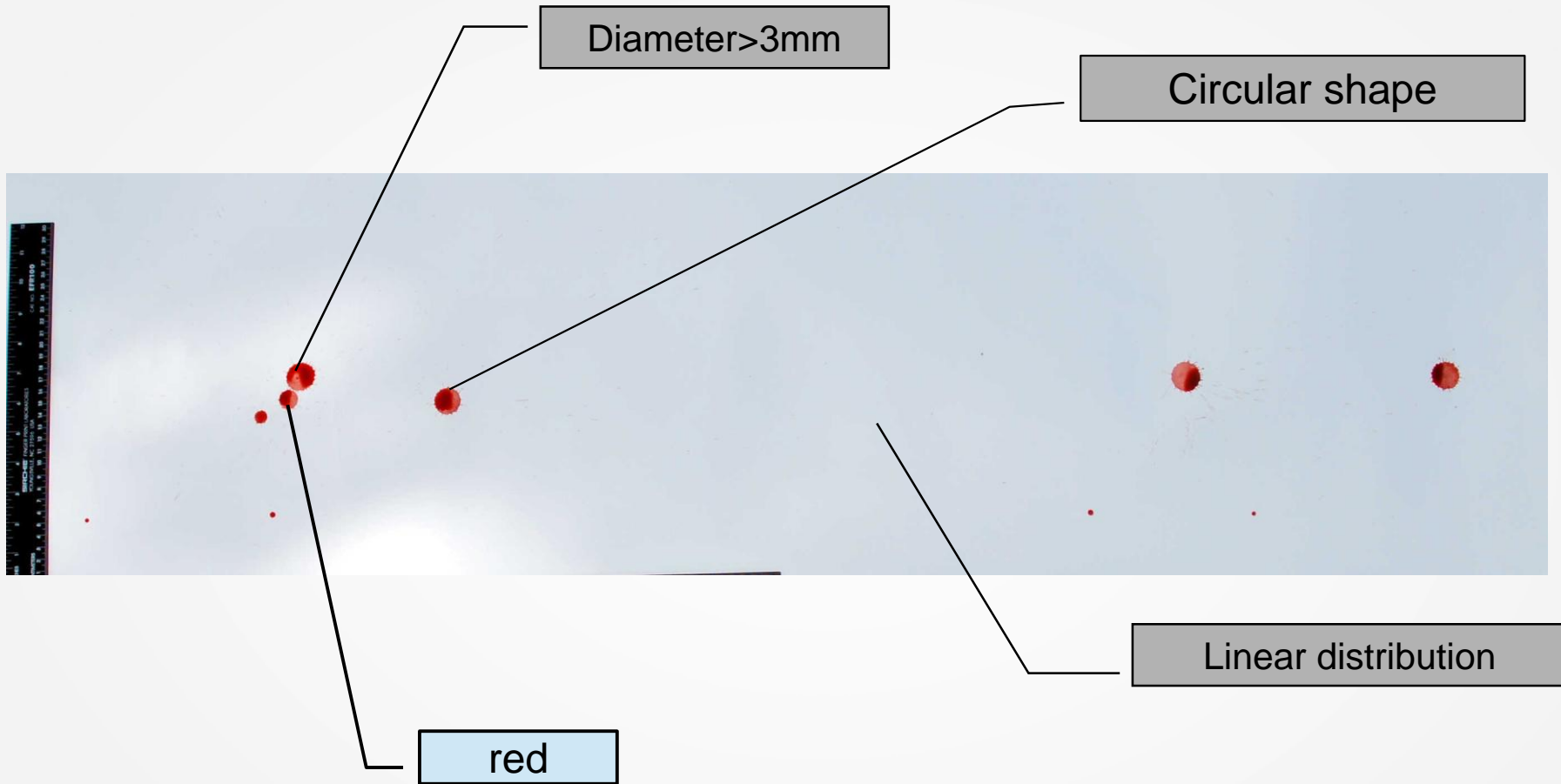
Description



- circular shape
- no distribution
- diameter > 3mm

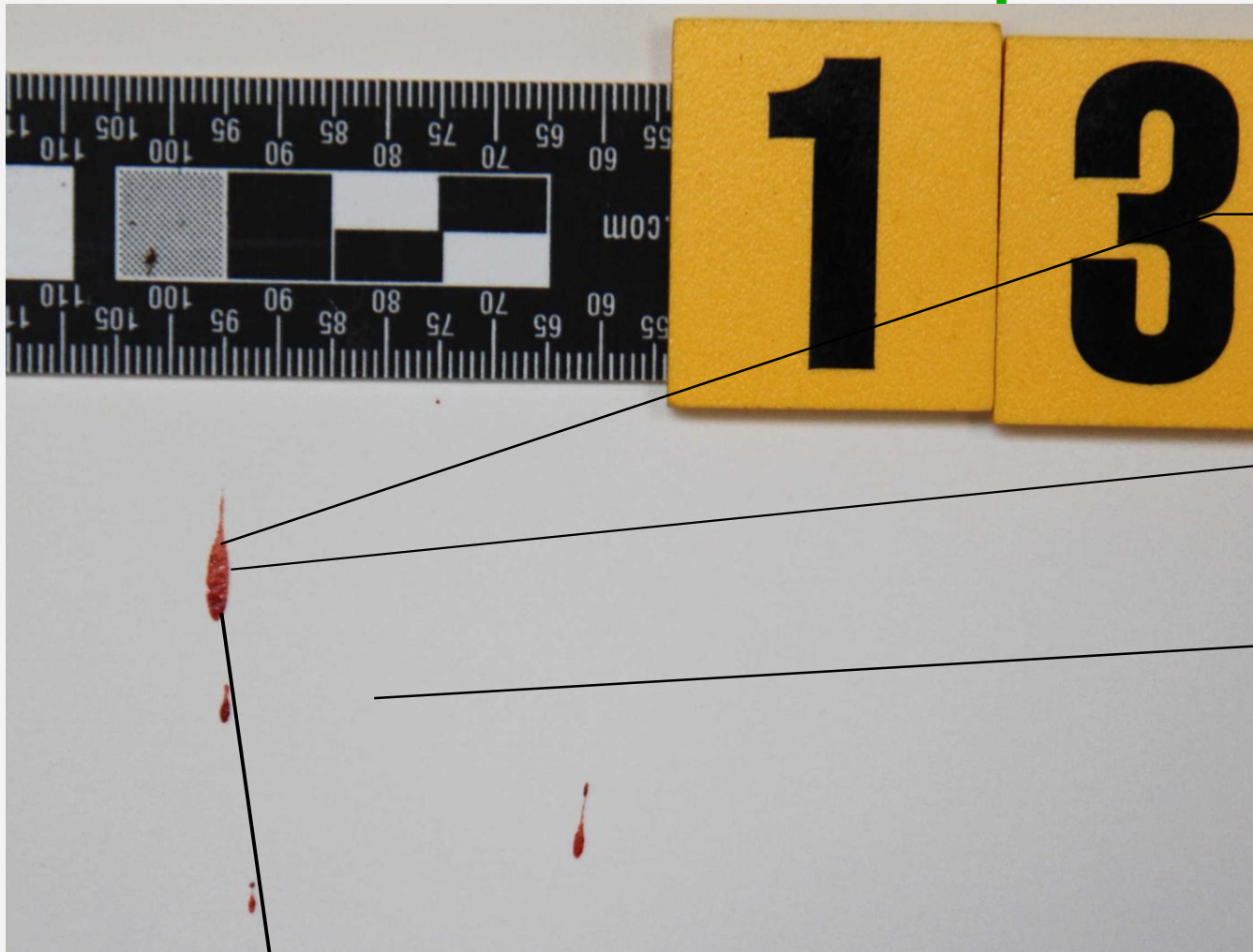
Drip stain

Description



- circular shape
 - Diameter > 3mm
 - **Linear distribution**
- } Drip trail

Description



Upward

Elliptic pattern

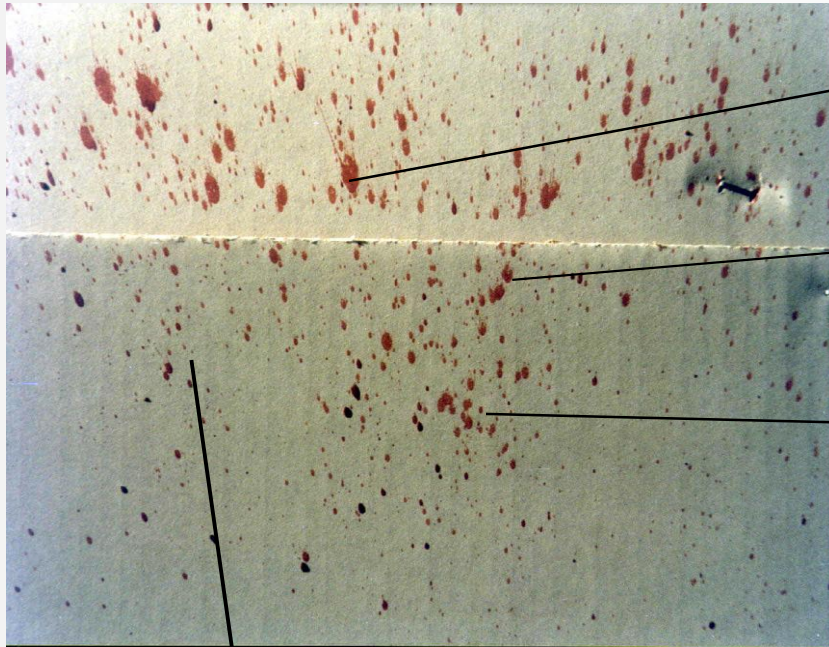
No enough information about the distribution

red

- elliptic shape
- no distribution found
- path directionality

Spatter

Description



Upward

Elliptic shape

Radiating distribution

red

- elliptic shape
- radiating distribution
- path directionality

Impact spatter

Description



Circular shape

No distribution

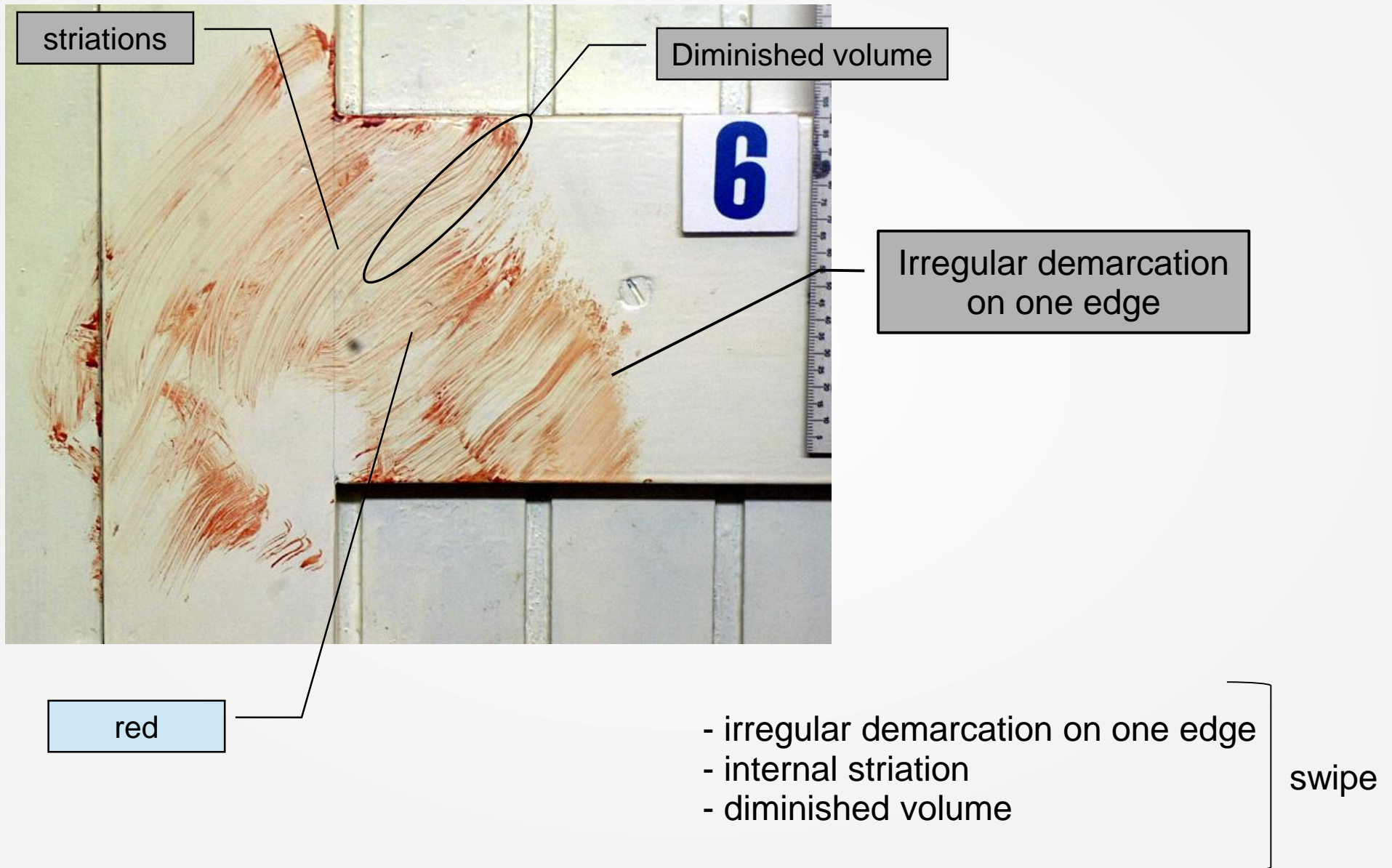
Variability of the diameters

red

- circular shape
- no distribution
- variability of the diameters
- Mist organization

Experitated spatters

Description



Description



red

striations

Diminished volume

Irregular demarcation on one edge

Pre-existing pattern

- irregular demarcation on one edge
- internal striation
- diminished volume
- pre-existing pattern

wide

Decision Map

Find the way!!

Bloodstain

Circular shape

Pre-existing pattern

Striations

Linear distribution

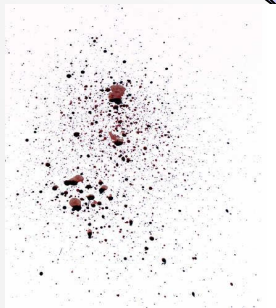
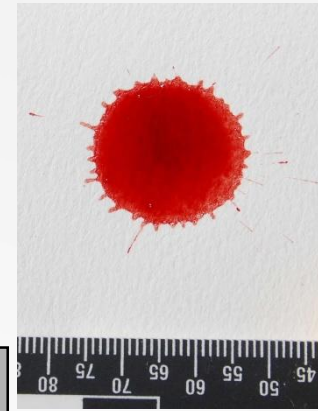
Diameter > 3mm

No distribution

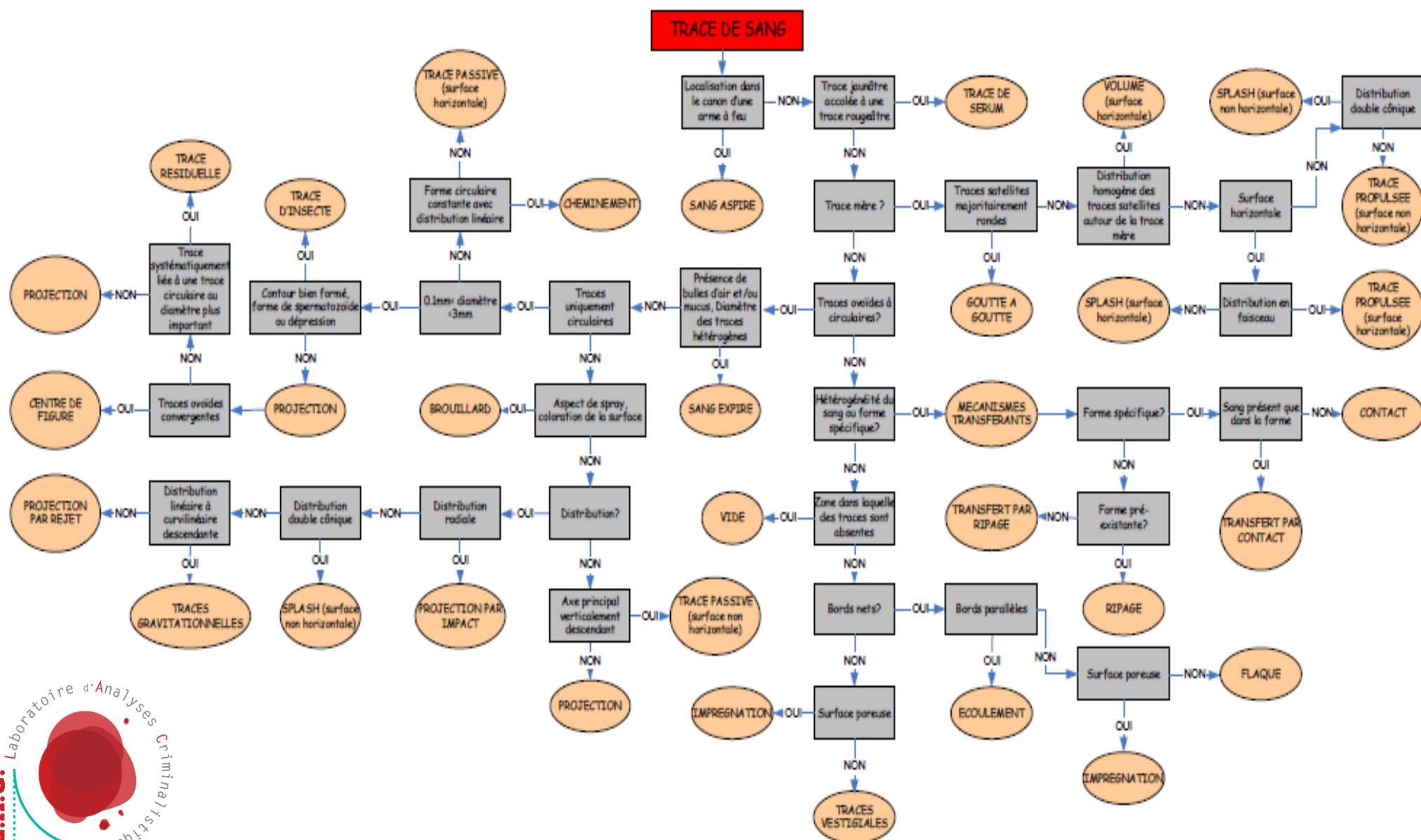
Diminished volume

Variability of the diameters

Irregular demarcation on the contact side



Decision Map



Decision Map for BPA

- Rigour to ensure BP Recognition
- Strengthen BP Identification
- Standardize BP identification
 - Facilitate review by another BPA expert even from another country
 - Standardize 1st level of BPA training
- Reinforce Scientific approach for BPA
- Provide ISO recognition to the BP Recognition

